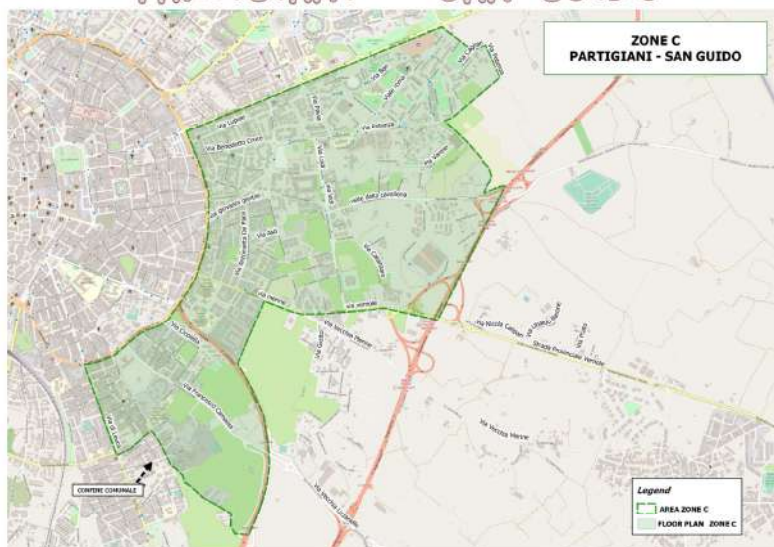




City of Lecce  
Department of  
Environmental Policies



# MUNICIPAL HYGIENE SERVICES MUNICIPAL CENTRE ZONE C "PARTIGIANI - SAN GUIDO"



## DISCOVER ONE OF THE ADVANTAGES OF SEPARATE COLLECTION

Bring your correctly sorted waste to the Waste Collection Centers and you will win shopping vouchers to be used in partner shops!  
Download the regulation from [lecce.montecosrl.it/it/comune](http://lecce.montecosrl.it/it/comune)

# HOUSEHOLD USERS

## KERBSIDE SEPARATE WASTE COLLECTION MUNICIPAL CENTRE ZONE C

	MON	TUE	WED	THURS	FRI	SAT
NON-RECYCLABLE WASTE IN GRAY CONTAINERS WITH SEMI-TRANSPARENT BAGS (kerbside collection)		●				●
ORGANIC WASTE IN BROWN BINS WITH COMPOSTABLE BAGS (kerbside collection)	●		●		●	
PAPER IN BLUE BINS WITHOUT BAGS (kerbside collection)	●					
PLASTIC IN TRANSPARENT BAGS (kerbside collection)				●		
GLASS/METAL IN GREEN BINS WITHOUT BAGS (kerbside collection)				●		

**BINS MUST BE PLACED ON THE SIDEWALK OF THE HOUSE FROM THE EVENING BEFORE THE DAY OF COLLECTION:  
FROM 8:00 pm to 5:00 am from 01/10 to 31/05  
and FROM 10:00 pm to 5:00 am from 01/06 to 30/09**

## MUNICIPAL COLLECTION CENTRES (CCR)

The Municipal Collection Centres are located in SP4 road to Novoli at the 4 th km, via Francesco Marzano n. 14, viale Grassi n. 150 (in front of the IP filling station) and in Viale Giovanni Paolo II n. 60.

### Opening time:

**Sp4 to Novoli (only NON-hazardous waste):**  
Monday and Saturday from 7:00 am to 1:00 pm  
Tuesday, Wednesday, Thursday and Friday from 1:00 pm to 7:00 pm

**viale Grassi:**  
Monday, Tuesday, Thursday and Friday from 7:00 am to 1:00 pm  
Wednesday and Saturday from 3:00 pm to 7:00 pm  
Sunday from 7:00 am to 1:00 pm

**via F. Marzano:**  
Monday, Tuesday, Thursday and Saturday from 1:00 pm to 7:00 pm  
Wednesday and Friday from 7:00 am to 1:00 pm

**viale Giovanni Paolo II:**  
Monday and Friday from 1:00 pm to 7:00 pm  
Tuesday, Wednesday, Thursday and Saturday from 7:00 am to 1:00 pm  
Sunday from 7:00 am to 1:00 pm

**The Centres will remain closed on holidays.**

**At the first delivery, you must show a copy of the last TARI (waste tax) notice.**

**You can deliver:** organic waste, paper, cardboard, plastic, metal, glass, clothes, pruning, bulky waste, wood, household appliances and electronic equipment, neon lamps, batteries, T (toxic) and/or F (flammable) containers, expired medicines, toners and cartridges for printers, vegetable and mineral oils, small quantities of inert materials (only from domestic sources). At the CCR on SP4 to Novoli at 4 th km you can deliver only non-hazardous waste classified as similar to municipal waste.

**The following cannot be delivered:** undifferentiated waste, scraps or car parts, special waste.

[lecce.montecosrl.it](http://lecce.montecosrl.it)  
[comunicazione@montecospa.it](mailto:comunicazione@montecospa.it)



Toll-free number  
**800 80.10.20**  
from Monday to Friday  
from 8:00 am to 7:00 pm,  
on Saturday from 9:00 am to 4:00 pm

# GUIDE TO CORRECT WASTE SORTING



## ORGANIC WASTE (with compostable bags)

Food remains, vegetable scraps, fruit peels, egg shells, coffee grounds, tea, chamomile and herbal tea filters, extinguished ash, dried flowers, cork, wood shavings (untreated), dirty pizza boxes (reduced in small pieces), natural litter, natural fibers, paper napkins and handkerchiefs (if not used by someone with a cold).



## PAPER (without bags)

The paper fraction includes all "clean" non-dirty and non-greasy paper materials: paper, cardboard packaging, cardboard, Tetrapak beverage cartons, newspapers, notebooks, books, magazines, advertising flyers, sketchbooks and drawing sheets, paper bags, paper and cardboard boxes. Small cardboard boxes must be crushed, any extraneous content must be removed and they must be placed next to the paper bin on the scheduled day of collection. Big cardboards or cardboards in large numbers must be delivered to CCRs.

**NOTE.** The following materials and objects must not be placed in the paper container: used paper napkins and handkerchiefs, greasy or wet or dirty paper, baking paper, greaseproof or plastic-coated paper, glossy drawing paper, parchment, carbon paper, sandpaper, polystyrene boxes, plastic-coated boxes and covers, nylon, receipts.



## PLASTIC (in transparent bags)

Plastic caps and lids, bottles, cream, sauce and yoghurt jars, packaging film (e.g. to group multiple beverage bottles), shopping bags/pouches, basins, clean food films and packaging, fruit and vegetable nets, plastic plates and cups (free of organic remains), plastic containers for food, detergent bottles, bands for binding packages, coat hangers. All containers must be completely emptied and their volume reduced.

**NOTE.** The following materials and objects must not be placed in the plastic container: rubber objects, plastic cutlery and straws, toys, plastic chairs, tubes, syringes, insulin needles and all "hard" plastic objects that are not household packaging, i.e. suitable for containing drinks, food, detergents and cleaners.



## GLASS/METAL (without bags)

Bottles, glass jars, clean aluminum basins and sheets, metal packaging, metal and tinplate containers, metal caps, aluminum cans, tinfoil, boxes. All containers must be completely emptied and cleaned of any residual food or liquid. **NOTE.** The following materials and objects must not be placed in the glass/metal container: light bulbs, ceramic, porcelain, neon lamps, glass panes, mirrors, pyrex containers, wired glass, opal glass (perfume bottles), crystals, paint or solvent cans.



## NON-RECYCLABLE WASTE (in semi-transparent bags)

**NOTE.** Non-recyclable waste is not undifferentiated waste. It consists exclusively of everything that is left after a careful selection and waste sorting, that is: disposable masks and gloves, paper napkins and handkerchiefs (if used by someone with a cold, as per ISS (Istituto Superiore di Sanità, Italian National Institute of Health) indications), baking paper, plastic-coated paper, carbon paper, greaseproof paper, adhesive paper, greasy or food-stained paper, receipts, adhesive tape, disposable plastic cutlery and straws, ceramic, porcelain, clay, terracotta, mirrors, crystals, pyrex, CDs, DVDs, VHS tapes, stationery, photographs, film rolls, pans, basins, vases and saucers, small toys, incontinence pads, nappies, draw sheets, sanitary towels, combs and brushes, toothbrushes, cosmetics, disposable blades and razors, chewing gums, mussel shells, extinguished cigarette butts, lighters, sponges, electrostatic cloths, wipes, rags, sweeping residues, vacuum cleaner bags, doormats, small amounts of worn out clothes, tights, nylon, rubber bands, synthetic litter, plaster, cotton buds, cotton wool, syringes and needles for insulin **with a sleeve to protect the needle.** Insert only waste classified as similar to municipal waste. Waste not classified as similar to municipal waste must be disposed of in compliance with the applicable regulations.



## COLLECTION CALENDAR FOR CLOTHES AND ACCESSORIES

Place the bags on the sidewalk from 10:00 pm on the evening before the day of collection and by 7:00 am. The collection will be carried out from 7:00 am to 1:00 pm.

### MUNICIPAL CENTRE ZONE C

description	jan-22	feb-22	mar-22	apr-22	may-22	jun-22	jul-22	aug-22	sep-22	oct-22	nov-22	dec-22
collection days	Wednesday 26	Wednesday 23	Wednesday 23	Wednesday 27	Wednesday 25	Wednesday 22	Wednesday 27	Wednesday 24	Wednesday 21	Wednesday 26	Wednesday 23	Wednesday 14
n. of interventions	1	1	1	1	1	1	1	1	1	1	1	1



## NAPPIES, DIAPERS AND THE LIKE

Location of underground computerized Ecological Islands with video surveillance for the sole delivery of nappies/diapers: Piazza Modena, Via della Lira Italiana (c/o Piazza C. Bene), Via M. Viterbo (c/o Piazzetta V. Cardarelli), via Tevere (c/o Piazzetta Indipendenza), Via M. Marinosci (Piazza Palio), Viale A. Moro (c/o Mercato delle Arti), Via A. De Pace (at the corner with via Mons. delle Nocche), Via Paolo VI, Via R. Leoncavallo (Villa Convento), Via Medaglie d'Oro (c/o Parco dei Colori), Via Versano at the corner with Via G. Maggio, Via A. Cudazzo at the corner with via Paladini, Via V. M. Stampacchia, Via S. Trinchese (opposite Footlocker), Via G. Salvemini, Viale dell'Università, Via dei Salesiani at the corner with Via S. Domenico Savio, and via E. Fermi (near the intersection of Via Monteroni). To request the **badge**, you can go to the Front Office set up in Via A. Diaz no. 34, call the toll-free number 800 80.10.20 or write to [comunicazione@montecospa.it](mailto:comunicazione@montecospa.it).



## MOWING AND PRUNING COLLECTION CALENDAR

### MUNICIPAL CENTRE ZONE C

description	jan-22	feb-22	mar-22	apr-22	may-22	jun-22	jul-22	aug-22	sep-22	oct-22	nov-22	dec-22
collection days	Wednesday 12	Wednesday 9	Wednesday 9	Wednesday 6 and 20	Wednesday 11	Wednesday 8	Wednesday 6	Wednesday 10	Wednesday 7	Wednesday 12	Wednesday 9	Wednesday 7
n. of interventions	1	1	1	2	1	1	1	1	1	1	1	1

Register at the Front Office in Via Diaz no. 34 to collect the sacks. When the bags are collected, the user will automatically be booked for the collection of clippings (collected in the sacks) and prunings (grouped in bundles) on the days indicated in the calendar. The user will receive a message to confirm the reservation. Place the sacks on the sidewalk from 10:00 pm on the evening before the day of collection and by 6:00 am. Alternatively, you can deliver clippings and prunings (in bundles) at the CCRs.



## DOMESTIC COMPOSTER

You can collect the domestic composter at the Front Office in Via Diaz no. 34. It is required to fill in the appropriate form and register it at the Record Office of the Lecce Town Hall.

### READ CAREFULLY!!!

#### THE FOLLOWING CONDITIONS MAY LEAD TO A PENALTY pursuant to the current Municipal Ordinance

- Delivery of waste without the specific bins (where provided).
- Delivery of mixed undifferentiated waste.
- Presence of extraneous waste within the separated fractions.
- Use of non-compostable bags for organic waste, non-transparent bags for plastic waste or non-semi-transparent bags for non-recyclable waste.
- Use of bags to deliver paper and glass/metal waste.
- Delivery of waste in unsuitable places (on the ground or in other users' bins).
- Delivery of waste outside the hours or days established or through bins other than those indicated.
- Delivery of non-emptied and non-crushed cardboard boxes.
- Failure to collect the containers 3:00 pm on the day of collection.

**FOR FURTHER DETAILS AND CLARIFICATIONS, YOU CAN CHECK THE [LECCO.MONTECOSRL.IT](http://LECCO.MONTECOSRL.IT) WEBSITE, OR YOU CAN DOWNLOAD THE MONTECO APP (AVAILABLE FOR BOTH ANDROID AND iOS) TO BOOK THE COLLECTION OF BULKY WASTE, USE THE "RIFIUTOLOGO" (WASTE LIST) FEATURE, CHECK THE CALENDAR, ETC.. FOR ANY DOUBTS ABOUT WASTE SORTING, WRITE TO [COMUNICAZIONE@MONTECOSPA.IT](mailto:comunicazione@montecospa.it) OR CALL THE TOLL FREE NUMBER 800.80.10.20 (MON-FRI 8am - 7pm; SAT 8am - 4pm)**

**MUNICIPALITY OF LECCE - ENVIRONMENT DESK:  
TELEPHONE: 0832 682583 - E-MAIL: [sportello.ambiente@comune.lecce.it](mailto:sportello.ambiente@comune.lecce.it)**